




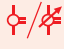
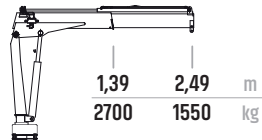


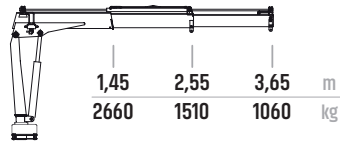
Basic Line

HC 39 T	 tm	 m	 °	 kg	 bar	 l/min
HC 39 T1	3.7	2.49	340	330	210	8
HC 39 T2	3.7	3.65	340	350	210	8
HC 39 T3	3.7	4.67	340	380	210	8
HC 39 T4	3.7	5.67	340	438	210	8

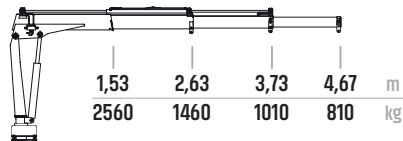
HC 39 T1



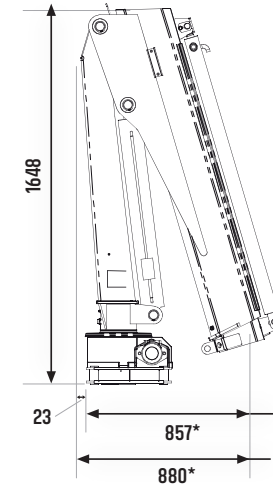
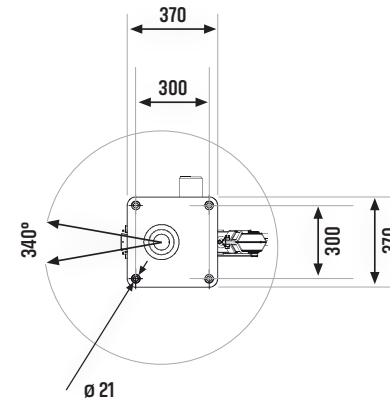
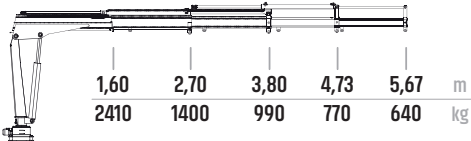
HC 39 T2



HC 39 T3



HC 39 T4



* Masse für / Dimensions pour HC 34 T1
 HC 34 T2: 872 mm / 895 mm
 HC 34 T3: 857 mm / 880 mm
 HC 34 T4: 967 mm / 990 mm